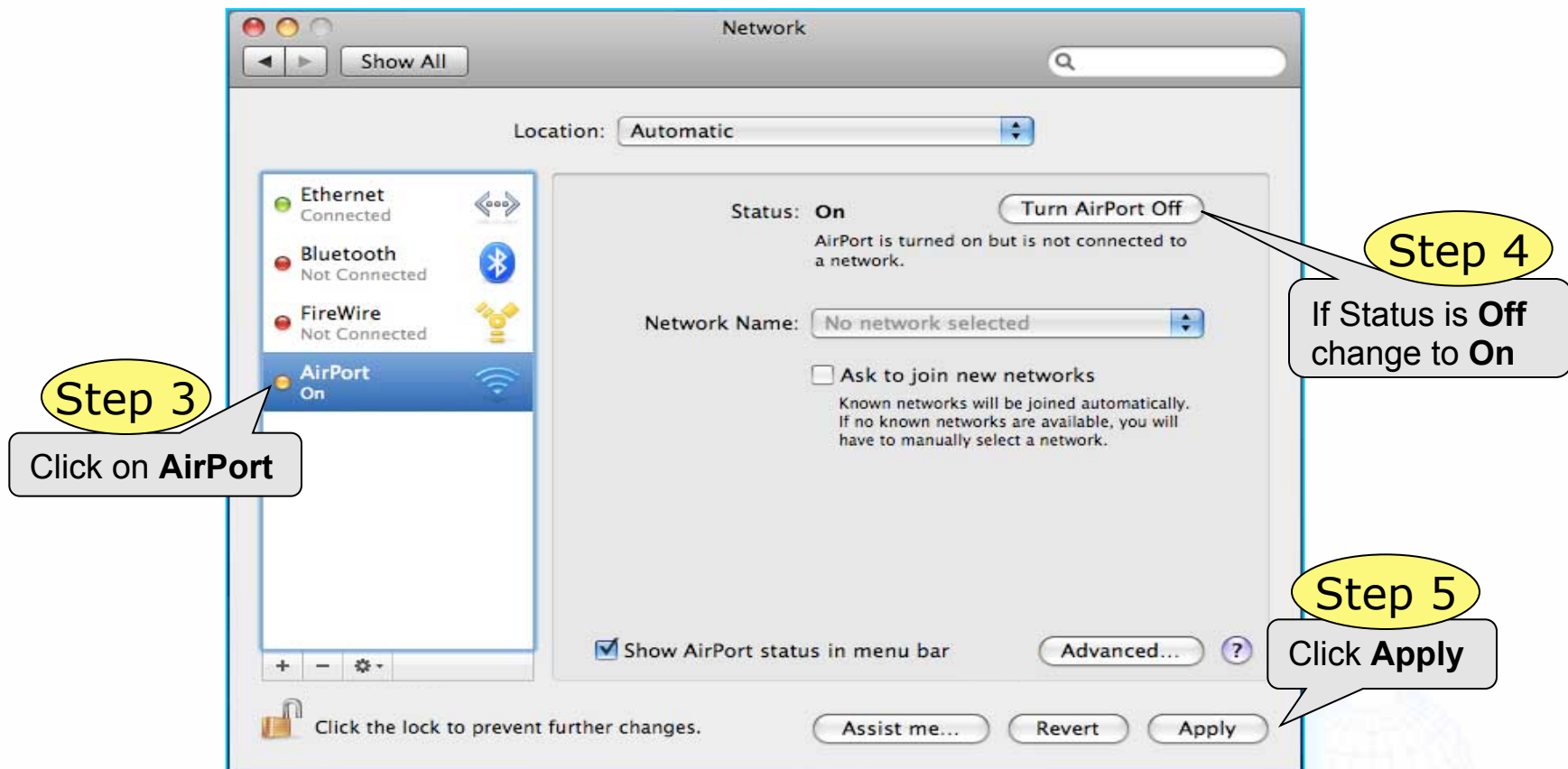


Connecting via Wi-Fi for OSX (1/2)

The image shows a Mac OS X desktop with two windows. The first window is the Finder application, with the 'System Preferences...' menu item highlighted. A callout box labeled 'Step 1' points to this menu item with the text 'Click System Preferences'. The second window is the System Preferences application, showing the 'Network' pane selected. A callout box labeled 'Step 2' points to the 'Network' icon in the 'Internet & Network' section with the text 'Click Network'. The System Preferences window is organized into sections: Personal (Appearance, Dashboard & Exposé, Desktop & Screen Saver, Dock, International, Security, Spotlight), Hardware (Bluetooth, CDs & DVDs, Displays, Energy Saver, Keyboard & Mouse, Print & Fax, Sound), Internet & Network (Mac, Network, QuickTime, Sharing), Accounts, Date & Time, Software Update, Speech, Startup Disk, Universal Access, and Other (Flip4Mac, WMV).

Connecting via Wi-Fi for OSX (2/2)



If ok, open browser, get Login Page and login with Username and Password

Else go to Troubleshooting – Wi-Fi Connection

Back to Step by Step Guide

